

## News from Nan

### NEWS 'N' VIEWS

# OUR “THREE-HOUR TOUR” ON SAN FRANCISCO BAY

AUGUST 21, 2018 | ANNA | LEAVE A COMMENT

On August 11, 2018, we took a three hour tour of San Francisco Bay on the USS Potomac, which is docked at Jack London Square right next to the Port of Oakland.



*Anna and mouse at Jack London Square*

The USS Potomac (AG-25), formerly US Coast Guard Cutter (USCGC) Electra, was Franklin Delano Roosevelt’s presidential yacht from 1936 until his death in 1945.



*USS Potomac at the dock*



*Fala was FDR's dog*



*An aptly named boat ("rhymes with" Livengood?)*

Fortunately, our tour ended more successfully than the one on Gilligan's Island! It was a beautiful day to be on the water, and we took photos of some of the container ships and the Golden Gate and Bay bridges.







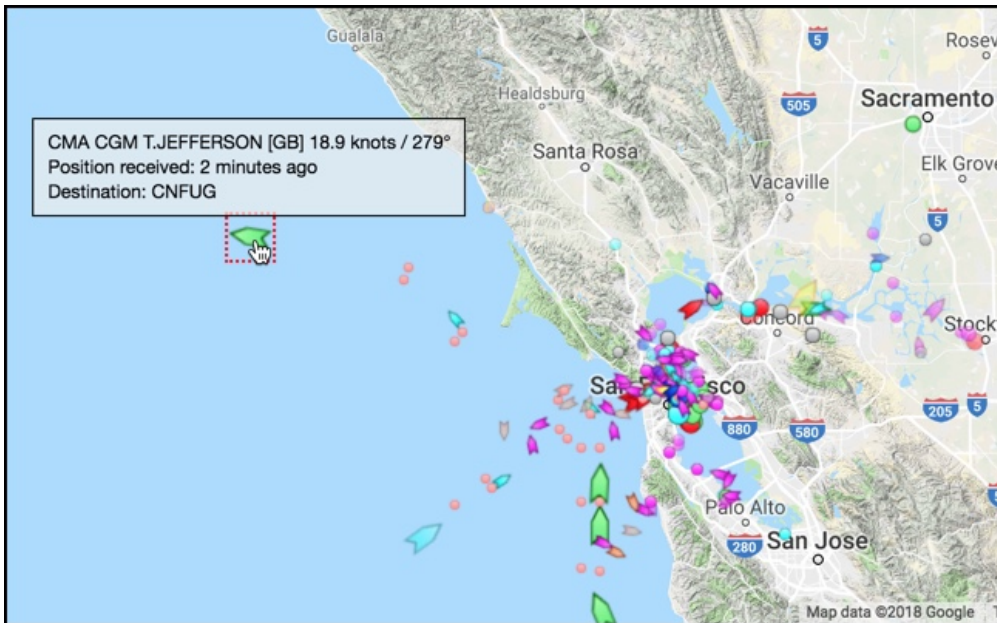


Do you see the (Bay) bridge troll?



CMA CGM T. Jefferson

According to marinetraffic.com, CMA CGM T.Jefferson left the Port of Oakland on 12 Aug 2018 at 6:00 a.m. and headed in a northwesterly direction in the Pacific Ocean.



Google map from [marinetraffic.com](http://marinetraffic.com) showing the location of the CMA CGM T. Jefferson on 12 Aug 2018. It was headed for China.

- ◀ 2018
- ◀ BRIDGE TROLL
- ◀ CALIFORNIA
- ◀ CONTAINER SHIP
- ◀ CUTTER
- ◀ FRANKLIN DELANO ROOSEVELT
- ◀ GOLDEN GATE BRIDGE
- ◀ JACK LONDON SQUARE
- ◀ JOHNSON
- ◀ MARINETRAFFIC.COM
- ◀ OAKLAND
- ◀ PORT
- ◀ PORT OF OAKLAND
- ◀ SAN FRANCISCO BAY
- ◀ USS ELECTRA
- ◀ USS POTOMAC
- ◀ VAN RAAPHORST

This site uses Akismet to reduce spam. [Learn how your comment data is processed.](#)