

## News from Nan

### TRAVEL

# HIKING THE FOUR CORNERS IN SEARCH OF RUINS

MAY 30, 2016 | ANNA

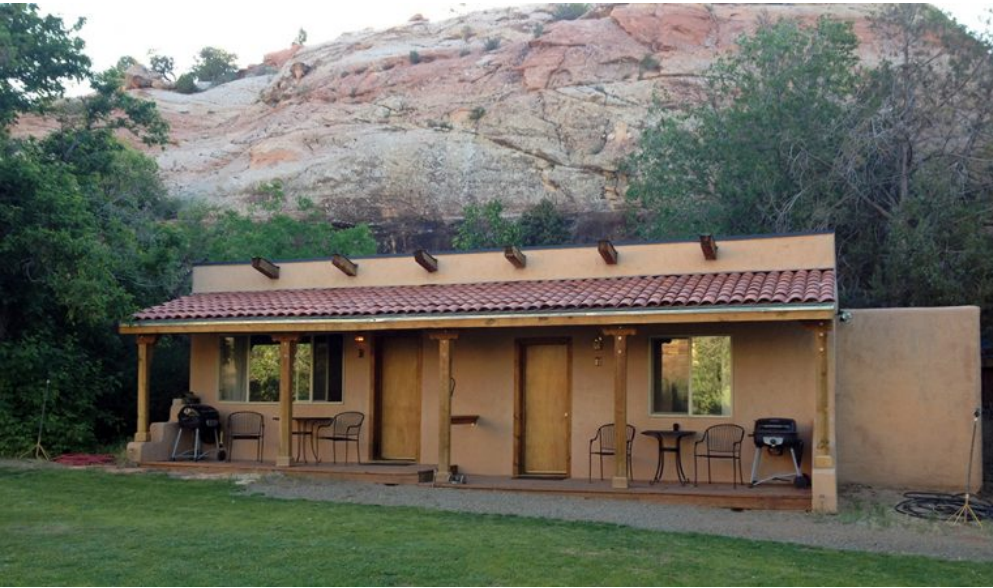


*Green Collared lizard*

In May 2016 Dick and I did a “hiking to ruins” Road Scholar trip in the Four Corners area (the place where Utah, Colorado, Arizona, and New Mexico come together). We flew in to Durango and stayed there overnight, and the following day we drove to Cortez, Colorado, where we stayed in a wonderful bed and breakfast called Kelly Place, which features a gorgeous location, wonderful food, and a cat named Cookie Dough.



*View from Kelly Place*



*Our room (on the left) at Kelly Place*



*Cookie Dough*

We had been there in 2014, when we participated in the “Dolores Project” that involved working at the Anasazi Heritage Center to sort and repackage Native American pottery sherds from archaeological sites that were threatened by the creation of the McPhee Dam and Reservoir.

This trip also had a Native American focus, but it involved hiking in to see kivas and other structures at various archaeological sites like Canyon of the Ancients, Hovenweep, and Mesa Verde . The trip was both interesting and challenging – we hiked about 5 to 7 miles every day, sometimes cross country.

In addition to the hiking, we had several programs focused on Native American history and culture (as we also did in 2014).



*Wanda (a Navajo), her husband Aldean (a Ute) and Wanda's nephew Charlie (taken in 2014)*

The weather was comfortably cool (in the 60s and low 70s), the scenery and ruins were fabulous, and the MANY wildflowers in bloom added to the show. The participants (about 18 people from all over the U.S. and Canada) were friendly and interesting to talk to, and our guides, Diane McBride and Dale Davidson, were well organized, knowledgeable, and fun to be with.



*Claret Cup cactus in bloom*

◀ 2016   ◀ ARCHAEOLOGY   ◀ COLORADO   ◀ CORTEZ   ◀ DURANGO   ◀ HIKING   ◀ KELLY PLACE BED AND BREAKFAST  
◀ POTTERY SHERD   ◀ ROAD SCHOLAR