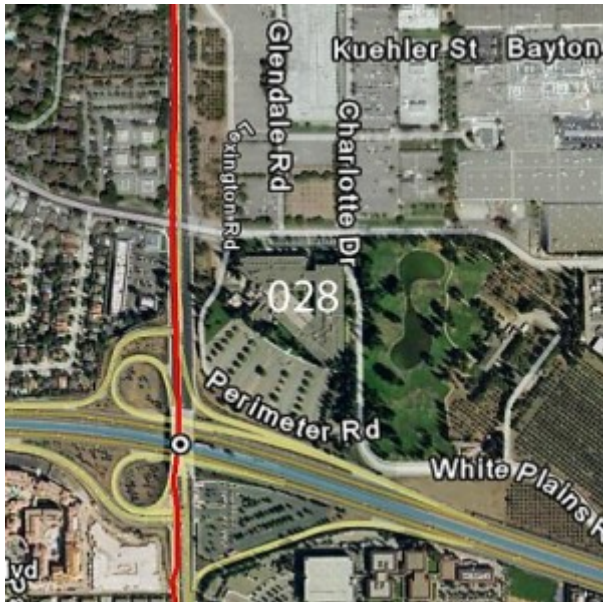


## News from Nan

COMPUTER HISTORY, NEWS 'N' VIEWS

# IBM BUILDING 028 APARTMENTS

FEBRUARY 29, 2016 | DICK



IBM Building 028

We recently moved into Ascent apartments near the corner of Cottle Road and Highway 85 in San Jose. In 2002 I retired from IBM, where I had been working at the Cottle Road site. Since then IBM sold the entire site to Hitachi and other commercial developers. I thought I remembered that where my apartment is located used to be occupied by IBM Building 028. Building 028 once housed IBM Research before they moved to their new quarters in the Almaden hills. I attended many meetings in that building when I was at IBM.

I managed to find an old aerial photo that shows the location of Building 028, and you can see it was right where my apartment now sits. So I am now calling it Building 028 apartments!

◀ 2016    ◀ ASCENT APARTMENTS    ◀ CALIFORNIA    ◀ COMPUTER HISTORY MUSEUM    ◀ IBM    ◀ SAN JOSE