

Rebmann Family Page

About the Rebmann family page

This is an introduction and overview of the Rebmann family. For more detailed information, see documents like ancestor reports and photo albums from Family Tree Maker.

Last Updated

December 18, 2023, by Richard H Johnson

Family Tree

Johnson-Moseley on Family Tree Maker and Ancestry. Home person: Richard H “Dick” Johnson. Focus person: Louise Jeanette Catherine Rebmann (1898-1974).

About the Rebmann family

Dick’s mother is Lillian Elizabeth Moseley. Rebmann family members are Lillian’s maternal ancestors, starting with Lillian’s mother, Louise Jeanette Catherine Rebmann.

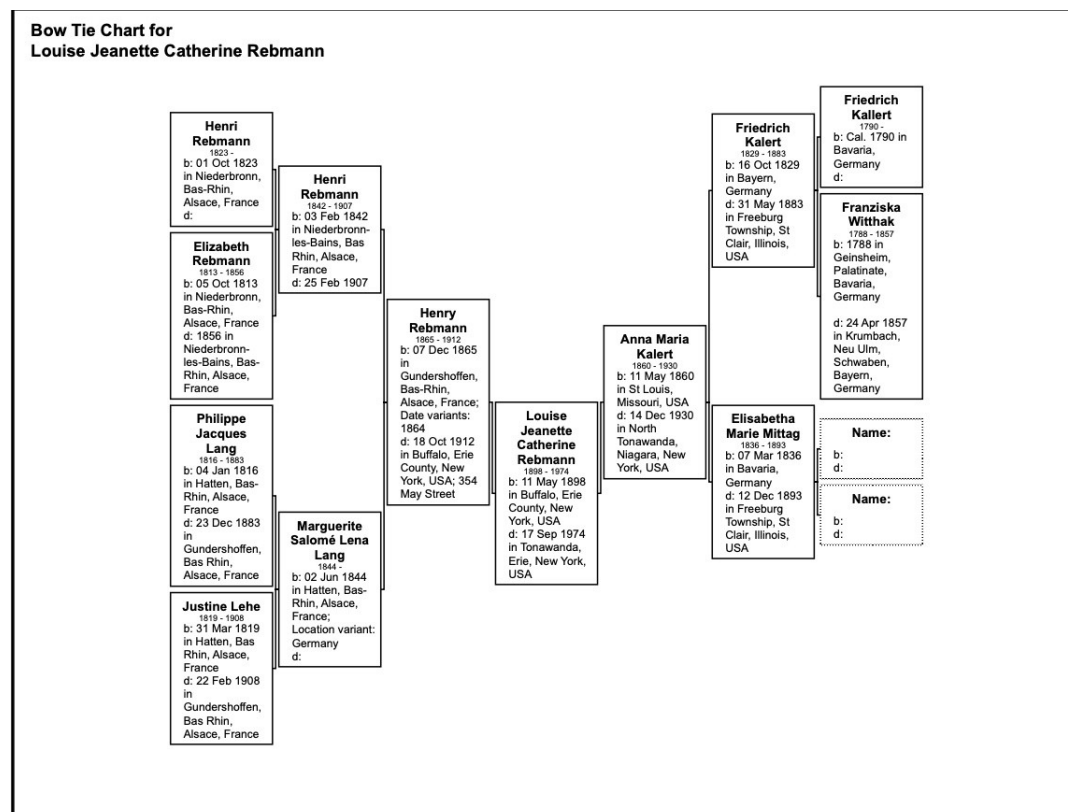


Photo gallery of Rebmann family members born in the United States

These are some of Henry and Anna (Kalert) Rebmann's children. Louise is the second from left. Probably circa 1910 in Buffalo, NY.



Here is Louise (Rebmann) Moseley with daughter, Lillian, and her sister Elizabeth's son, Smith Aldrich.



Here are Anna, Elizabeth, Louise, and Henry Rebmann as adults



This is a portrait of Selma (Rebmann) Steckelberg, taken in 1940.



This four-generation photo is Louise (Rebmann) Moseley with daughter, Lillian, grandson, Dick, and great-granddaughter, Ellen.



The Rebmann family in France

The Rebmanns originated in Bas-Rhin, Alsace, France.



Dick's great-grandfather Henry Rebmann was born in Gundershoffen, Alsace, just south of the town of Niederbronn, which is famous for its spa and its wine. Henry's mother, Salome Lang, was born just east of Niederbronn, in the farming village of Hatten.

In 2013, when Dick and Anna were in Europe celebrating their 50th wedding anniversary, they went to Alsace and visited the area where the Rebmanns came from.

This is a picture Dick took of the village of Hatten.



This is Dick in the Hatten cemetery in 2013.



Migration story of the Rebmann branch

Most of the Rebmanns in Henry's generation came to the United States. Henry arrived in 1888 on a ship that left Europe from Le Havre. Henry and his brother Peter settled in the area around Buffalo, New York.



Sister Karoline (Carrie) Rebmann lived in Ohio.



Sister Salomea (Sally) settled in San Francisco. She is buried in Cypress Lawn cemetery in Colma. The picture below shows Dick visiting Salomea Rebmann Guenthers grave in Colma.



Migration story of the Kalert branch

The Kalerts lived in Geinsheim, Germany, which is now in Rhineland-Palatinate, but which was part of Bavaria in the 19th century. In 1857 the family immigrated to St. Louis via New Orleans.

This portrait of Anna Kalert was taken in St. Louis around 1880.



Most of the Kalert family lived their whole lives in Freeburg, Illinois, across the Mississippi River from St. Louis. It is not known when, how, or why Anna Kalert moved to the Buffalo area where she met and married Henry Rebmann.

Rebmann ancestor surnames

- Guttman
- Kalert
- Lang
- Lehe
- Mittag
- Rebmann
- Wilhack (Witthak)
- Mylemann
- Ruch
- Gallmann
- Kraemer